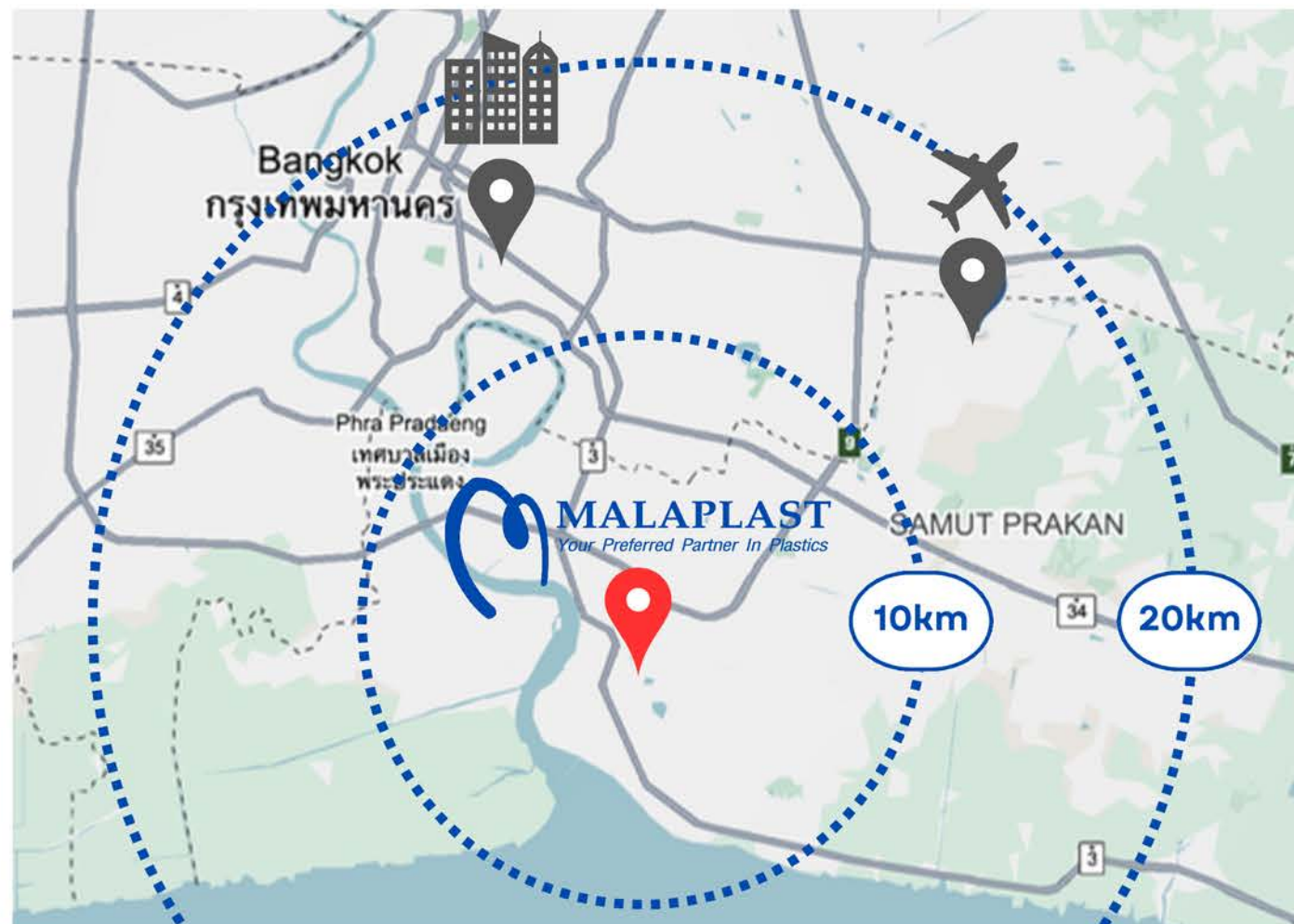




COMPANY PROFILE

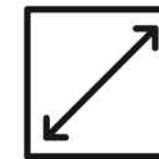
OUR FACILITY

Location:



Samutprakarn, Thailand
Bangkok Metropolitan area

Size:



75,000 sq.m.

Staff:



800 employees

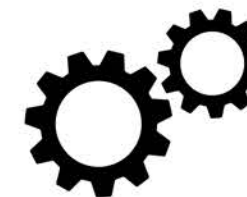
Hours:



3 shifts, **6** days/week

24 hours/ day

Machines:

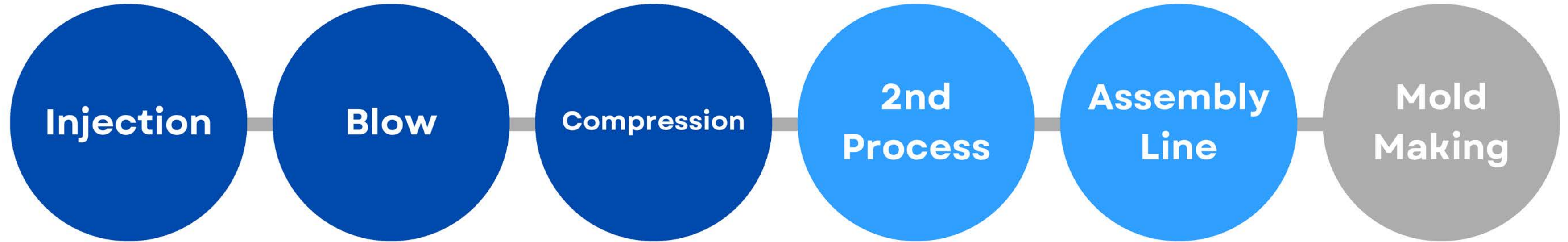


160 Injection Molding

28 Blow Molding

31 Compression Molding

PRODUCTION CAPABILITY



**We strive to be a
one-stop service
center for our
customers.**



INJECTION MOLDING FACILITY

160 Injection Molding Machines

Brands & Quality

SIZE

Toshiba

Nissei

Arburg

KM

Fanuc

JSW

CLF

Thermoset

2K

20

-

750
Tons

10

36

101

3

3

1

1

4

1

BLOW MOLDING FACILITY

28 Blow Molding Machines

Brands & Quality

SIZE

AOKI

NISSEI ASB

SINCO

SMC

UNILOY

VICTOR

1

7

5

7

3

5

5ML
-
30L

COMPRESSION MOLDING FACILITY

31 Compression Molding Machines

Brands & Quality

SIZE

HAN CHANG

JOHANESSEN

MALA

MATRICORA

YUE CHIEH

100

-

650

Tons

14

4

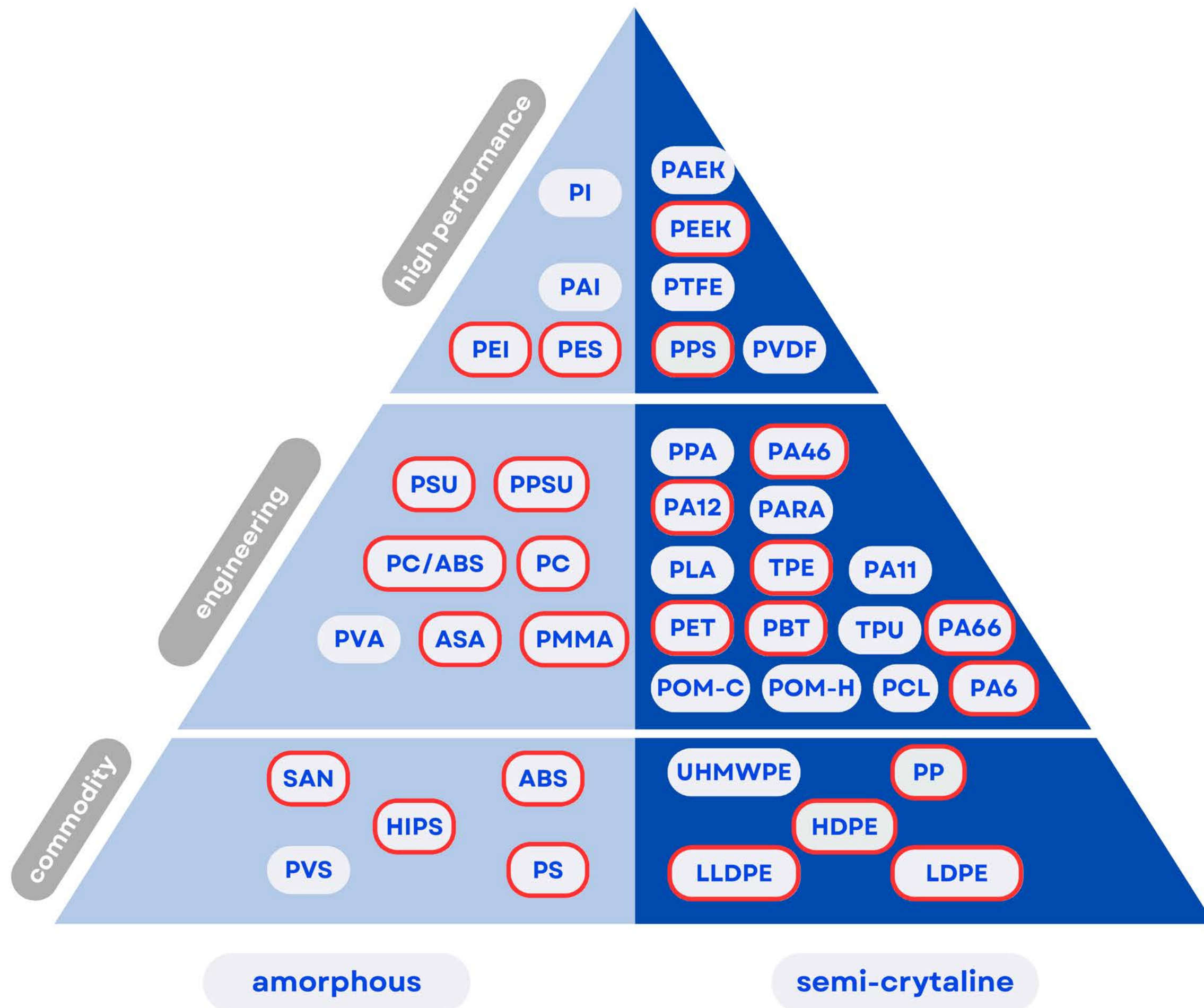
1

2

10

RAW MATERIAL

We work with a wide range of raw materials, from commodities to high-performance plastics. Highlighted in **red** are the raw material we have worked with to satisfy our customers' requirements.



SECONDARY PROCESS

Spray Painting

- 6-Axis Robot
- Masking Jig Fixture
- UV Painting Spray

PAD Printing

- 2-4 Colors/Machine

Dipping

Water Transfer Printing Process

Silk Screen Printing

- Manual
- Automatic
- UV Ink

Assembly Line



SECONDARY PROCESS

Automatic Sticker Labeling

Hot Stamping High-Speed

Welding

- Heat welding
- Vibration welding
- Ultrasonic welding

Laser Marking

Drilling Process

Finishing Process

- De-flashing machine (Thermoset)
- Sanding, Buffing
- Complete packaging assembly



TOOL SHOP

One-stop service offering:

Mold design

Mold Manufacturing

- Compression molds
- Color compression molds
- Multi-cavity caps & closure
- Thin Wall Molds
- Blow Molds
- Injection stretch blow molds
- High-precision technical parts
- Fully hot Runner molds, Cold runner Molds
- 2K Molds

Trials and Approval documents

Part production

Machines & Software Capability:

High-Speed Milling CNC

- CNC EDM
- CNC Wire cut
- CNC Lathe

Die Spotting Machine

Conventional machinery

CMM & Smart Scope



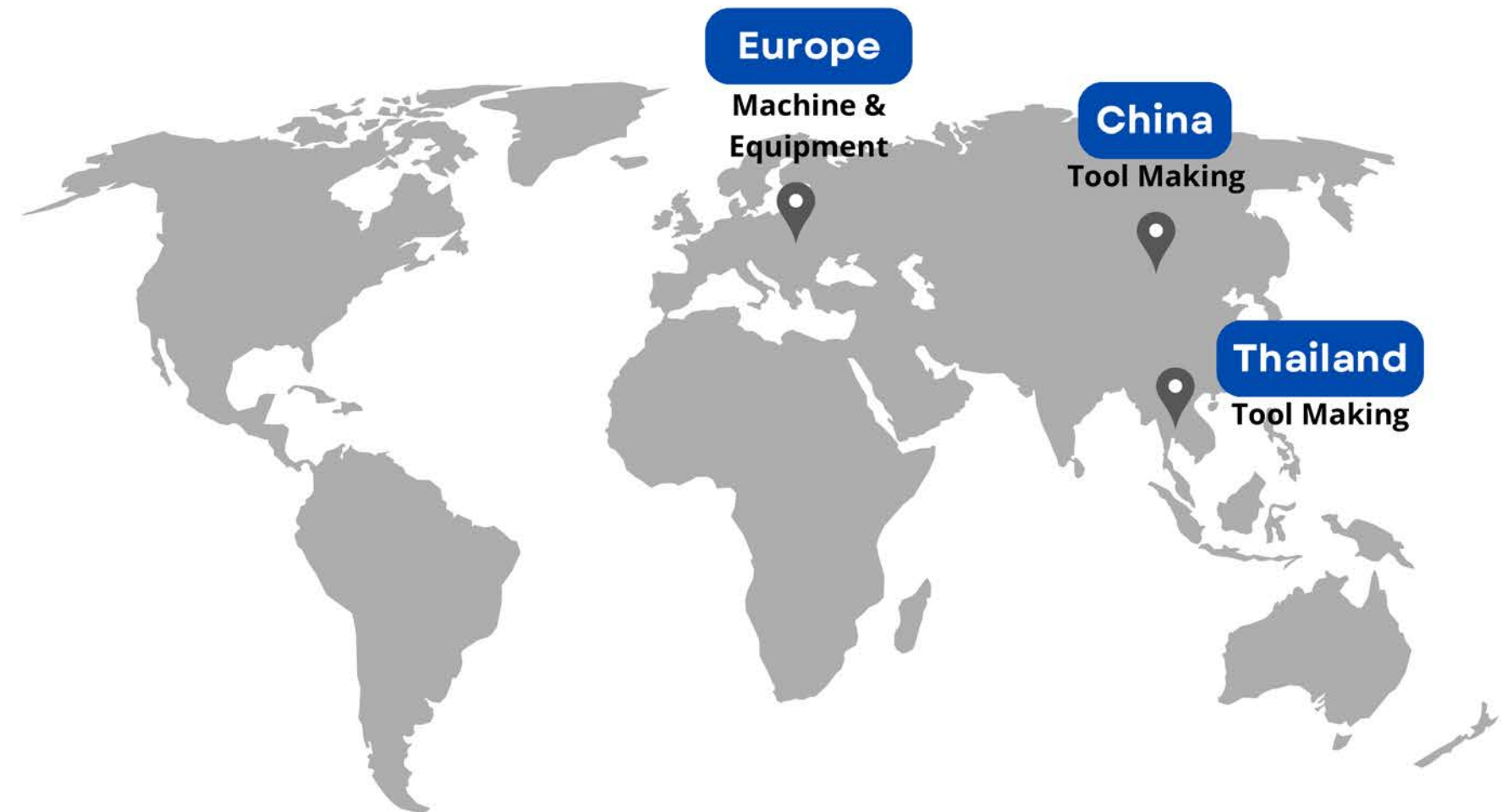
MOLD MAINTENANCE CENTER

Repair & Modify Molds

In-House Equipments:

- **CNC**
 - CNC EDM
 - CNC Wire
- **Milling Machine**
- **Round Grounding**
- **Laser Welding**
- **Mold Tuning**
- **Ultrasonic cleaning machine**
- **Surface Grounding**

Our Tooling Partners:



WAREHOUSE & LOGISTICS

Our delivery system

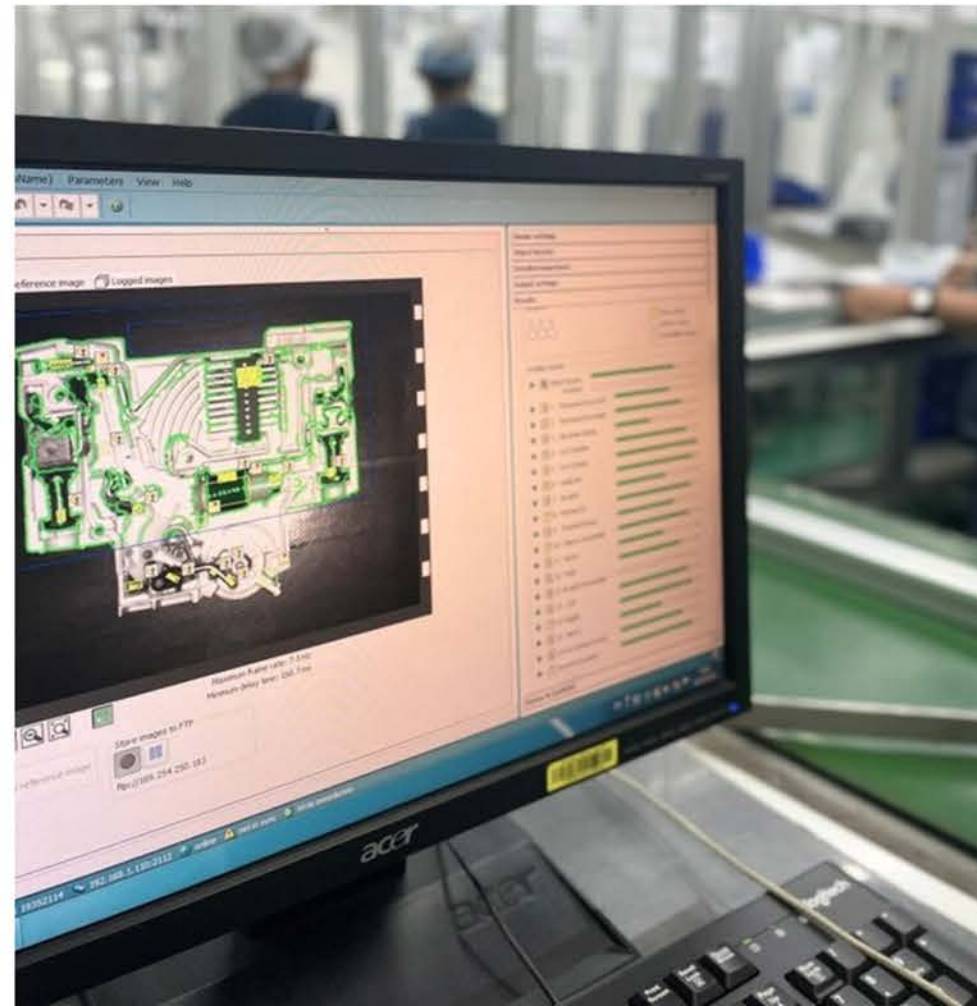
- Warehouse area: capacity of **5,300 pallets, over 7,300 m²**
- Fully integrated ERP system
- Support all kinds of logistics systems.
- Transportation vehicle: Both Owned and Sub-contracted.
- All trucks are tracked by GPS



QUALITY ASSURANCE

Our Measurement Equipments:

- Profile projectors
- Coordinate Measuring Machine (CMM)
- Small tool (PIN gate, Micrometer)
- 3 Axis non-touch measurement (Smart scope)
- Spectrophotometer universal testing machine
- High Power Microscope



QUALITY ASSURANCE

Our Certificate & Compliant

- ISO9001:2015
- ISO14001:2015
- HACCP/GHPS
- AS9100, AS9104/1:2012-1
- TIS 2921-2562
- European Community Directive 2002/95/EC (RoHS/REACH)
- UL (Underwriter Laboratories)
- Green Industry



PRODUCTS

- **Household**
- **Packaging (Blow Molding, Injection)**
- **Pharmaceutical**
- **Aerospace**
- **Automotive Parts**
- **Electrical Parts**
- **Technical Parts**



PRODUCTS

Household



PRODUCTS

Packaging - Blow Molding



Packaging - Injection



PRODUCTS

Automotive

Knobs & Switches



Recliner



Aerospace

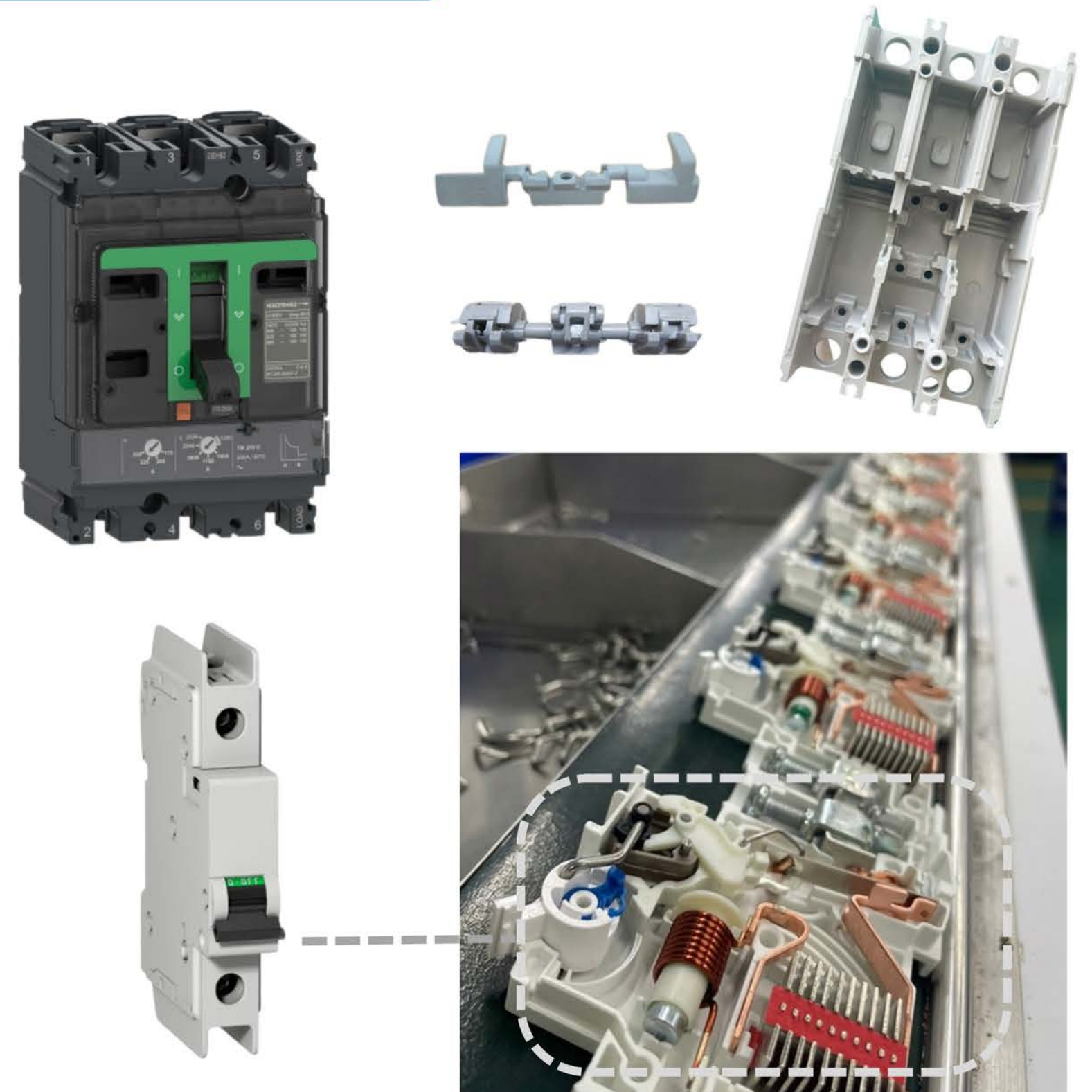


PRODUCTS

Technical Parts



Electrical Parts



OUR CUSTOMERS

F&H
GROUP

NEO
NEO FACTORY CO.,LTD.

Schneider
Electric

ARS
Safety & Quality

scJohnson
A family company
at work for a better world


OISHI おいし
GROUP い

MEPAL

TEC

SANDEN
Delivering Excellence

Pioneer

TEC
TOYODENSO

NEC

PLYMVENT®

PHACHA

MST

ADIENT

TN

MR.D.I.Y.
Always Low Prices

 **DRIESSEN**


SWAROVSKI

KIM PAI
PRINTING & PACKAGING

 **COLGATE-PALMOLIVE**

LABORATOIRES
URGO

 **SAFRAN**

STIEBEL ELTRON

ATACO
SINCE 1981

THAI NAKORN PATANA


STANDARD
MANUFACTURING

AMERASIAN
 **Fragrance**
RESEARCH LTD.

THANK
YOU

—